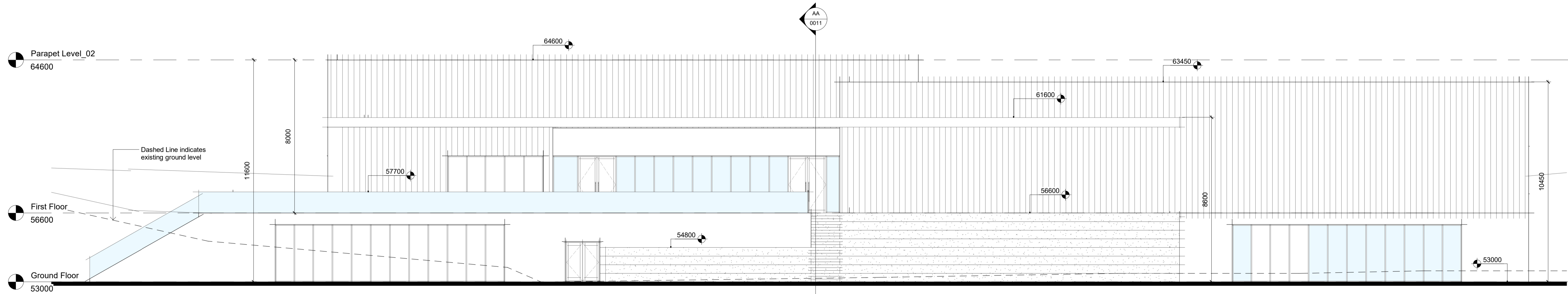


D.02 Proposed Rear Elevation
1 : 100



D.01 Proposed Front Elevation
1 : 100



**Comhairle Contae
Dhún na nGall**
Donegal County Council

Community Development & Planning Services
Regeneration & Development Team

Three Rivers Centre, Lifford, Co Donegal

Tel:(074)9153900 | Fax:(074)9141793 | www.donegalcoco.ie
L. Ward, Director of Community Development & Planning Services

Status Key
SL Survey
SK Sketch Design
INFO Information
PL Planning - Part 8
DD Detailed Design
FSC Fire Safety Cert.
DAP Dis. App. Cert.
T Tender
C Construction
CPO CPO
SF Safety File
O Other

| Rev | Date | Description | Issued by |
|-----|------|-------------|-----------|
| | | | |
| | | | |
| | | | |
| | | | |
| | | | |
| | | | |
| | | | |
| | | | |

| | | |
|--|------------------------------|-----------------------|
| Project Title: Creeslough Community Regeneration Project | First Issue Date: 27.07.2023 | Status: PL |
| Location: Creeslough, Letterkenny, Co. Donegal | Drawing No. 0010 | Revision: / |
| Drawing Title: Proposed Elevations - Sheet 01 | Scale: 1 : 100 | Drawn By: S O'Donnell |
| Checked By: J Neils | Approved By: P Kelly | Project No.: CCRP |

